

# UFLI Foundations Alachua County Public Schools (ACPS) Family Resources

## [UFLI Foundations Family Webinar Recording](#)

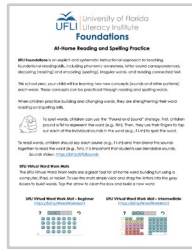
(originally aired on 12/6/2021)



[Click to view the webinar.](#)

### At-Home Reading and Spelling Practice Handout

(click [link](#) or image to download)



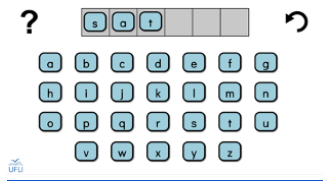
### Blendable Sounds Video

(click [link](#) or image to watch video)



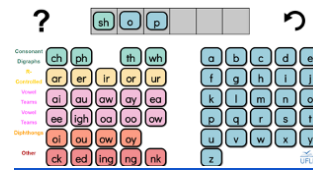
### Beginner Word Work Mat App

<https://bit.ly/WordWorkMat1>



### Intermediate Word Work Mat App

<https://bit.ly/WordWorkMat2>



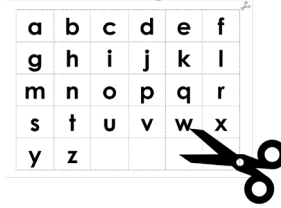
### Instructions for Word Work Mat App Tablet Use

(click [link](#) or image to download)



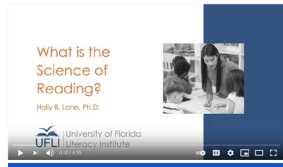
### Printable Letter Tiles

(click [link](#) or image to download)



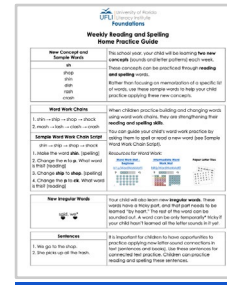
## Science of Reading Video

(click [link](#) or image to watch video)



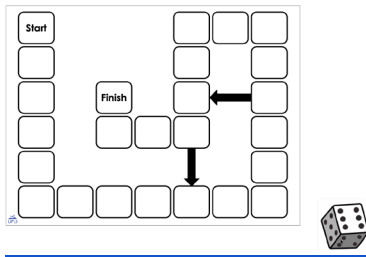
## Weekly Home Practice Guide

(click [link](#) or image to download)



## Board Game Templates

(click [link](#) or image to download)



## Decodable Book Lists

(click link to download)

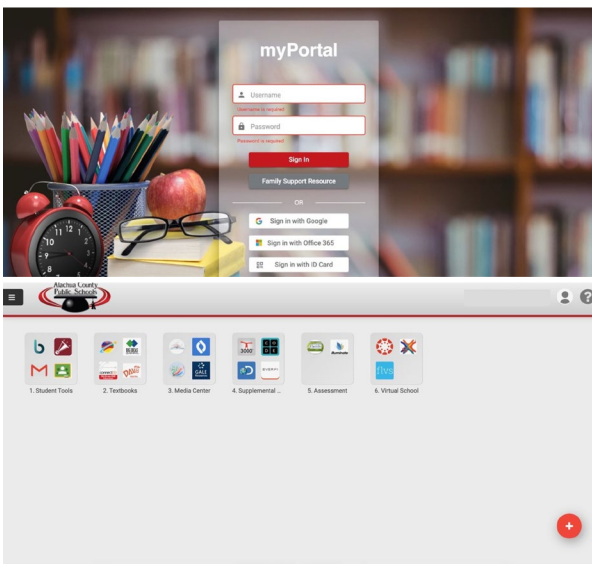
[Kindergarten](#)  
[First Grade](#)  
[Second Grade](#)

Lexile	Reading # of Book
100-200	1
200-300	2
300-400	3
400-500	4
500-600	5
600-700	6
700-800	7
800-900	8
900-1000	9
1000-1100	10
1100-1200	11
1200-1300	12
1300-1400	13
1400-1500	14
1500-1600	15
1600-1700	16
1700-1800	17
1800-1900	18
1900-2000	19
2000-2100	20
2100-2200	21
2200-2300	22
2300-2400	23
2400-2500	24
2500-2600	25
2600-2700	26
2700-2800	27
2800-2900	28
2900-3000	29
3000-3100	30
3100-3200	31
3200-3300	32
3300-3400	33
3400-3500	34
3500-3600	35
3600-3700	36
3700-3800	37
3800-3900	38
3900-4000	39
4000-4100	40
4100-4200	41
4200-4300	42
4300-4400	43
4400-4500	44
4500-4600	45
4600-4700	46
4700-4800	47
4800-4900	48
4900-5000	49
5000-5100	50
5100-5200	51
5200-5300	52
5300-5400	53
5400-5500	54
5500-5600	55
5600-5700	56
5700-5800	57
5800-5900	58
5900-6000	59
6000-6100	60
6100-6200	61
6200-6300	62
6300-6400	63
6400-6500	64
6500-6600	65
6600-6700	66
6700-6800	67
6800-6900	68
6900-7000	69
7000-7100	70
7100-7200	71
7200-7300	72
7300-7400	73
7400-7500	74
7500-7600	75
7600-7700	76
7700-7800	77
7800-7900	78
7900-8000	79
8000-8100	80
8100-8200	81
8200-8300	82
8300-8400	83
8400-8500	84
8500-8600	85
8600-8700	86
8700-8800	87
8800-8900	88
8900-9000	89
9000-9100	90
9100-9200	91
9200-9300	92
9300-9400	93
9400-9500	94
9500-9600	95
9600-9700	96
9700-9800	97
9800-9900	98
9900-10000	99

## Accessing Reading A - Z

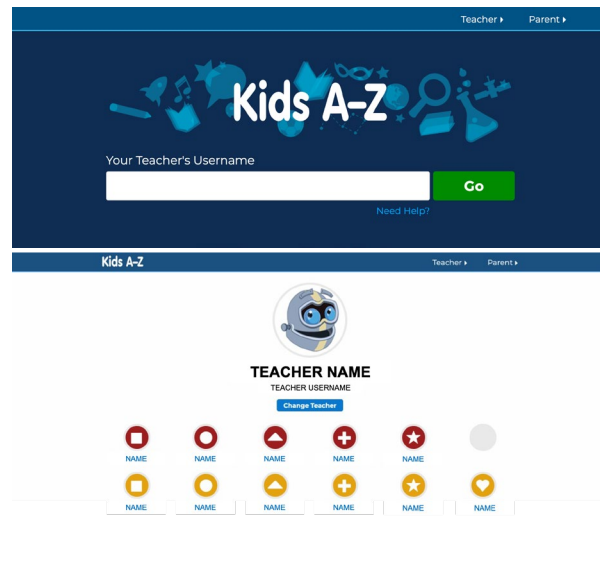
### Option #1: ACPS Student "My Portal"

<https://acps.gg41.com>



### Option #2: Using Kids A-Z Login

<https://www.kidsa-z.com>



The image shows a student dashboard interface. At the top, there is a navigation bar with "Kids A-Z" on the left and "Teacher" and "Parent" on the right. Below the navigation bar, the student's name "STUDENT NAME" is displayed, along with a "Change Student" button. Underneath, the "Student Password" section features a grid of red icons representing various subjects and a green "Go" button. The main area of the dashboard is filled with a grid of educational resource icons, including Achieve3000, code.org, Discovery Education, Everfi, Civics, Imagine Learning, Istation, IXL, Khan Academy, Kuder Galaxy, MyBrainPOP, Newsbank, PBS Learning Media, and Raz-Plus. A black arrow points to the Raz-Plus icon. Below this grid, there is a section titled "4. Supplemental Resources" which contains a login overlay for Alachua County Public Schools. The overlay includes options to "Log in with MyPortal", "Log in with Clever", and "Log in with LDAP", along with a "Clever" logo and a "Clever Student Log In" button. A black arrow points to the Clever logo in the overlay. The Clever logo and copyright information are also visible in the bottom left corner of the overlay area.

## Using Reading A - Z

## Option #1: "My Assignment"

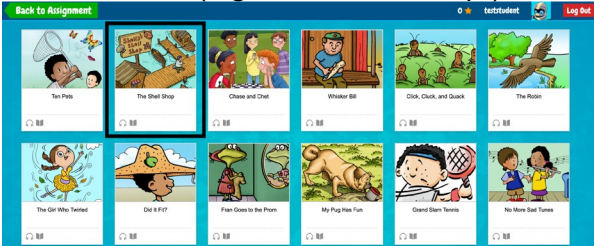
1. Click "My Assignment"



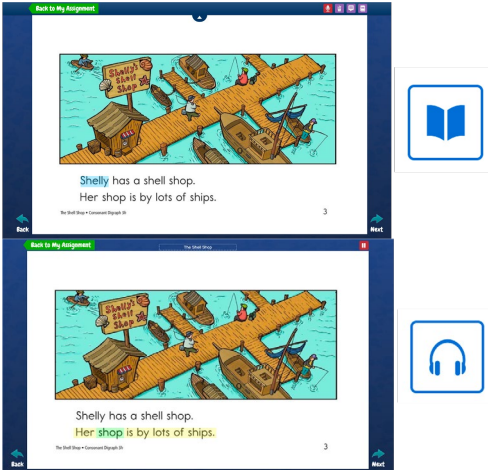
2. Click "Single Assignments"



3. Select book (e.g., "The Shell Shop")



4. Read or listen to the book

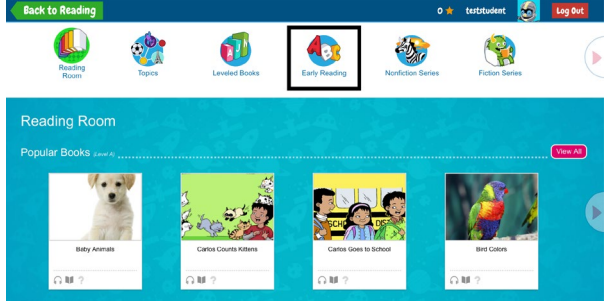


## Option #2: "Reading Room"

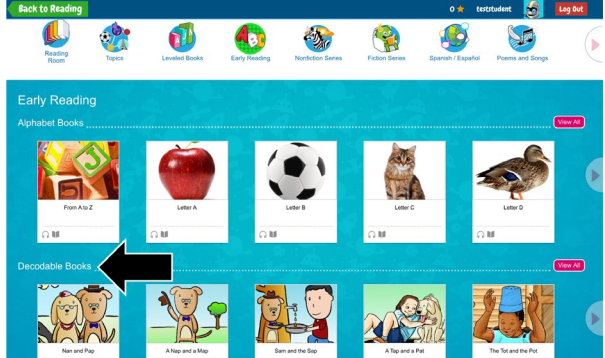
1. Click "Reading Room"



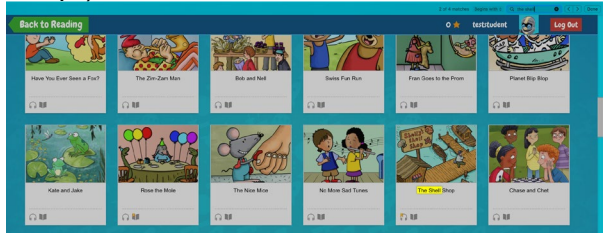
2. Click "Early Reading"



3. Click "Decodable Books" > View All



4. Search for book using title (e.g., "The Shell Shop")



5. Read or listen to the book (see images on left)